



Recycling Guide for the
Residents of Lebanon County

Recycling Roundup

2025-2026

Recycling's Top 10 **NOT** Most Wanted List

It may be tempting when you aren't sure whether something is recyclable, to just put it in the recycling bin anyway in hopes that *they'll find a way to recycle it*. This is called **wishcycling**. In order to keep the recycling system healthy, it's just as important to leave the **bad** stuff out of recycling as it is important to put the **good** recyclable stuff in the recycling.



Whenever you try to recycle items that you shouldn't, it harms recycling. Sometimes those items can put recycling facility workers at risk or danger; sometimes those items cause the recycler to lose money and/or down time because they tried to sort or process them; and ultimately those unwanted items really slow down the recycling facility operations so that fewer overall materials can be processed by the facility each day, which hurts the health of the recycling business.

You should think of recycling more as a system designed to process a select set of valuable materials to turn into something new again. The recycling system was built especially to sort and process these select materials, but not everything else. All the materials that end up as waste from our households that aren't recyclable are either not valuable enough to create a recycling stream for, or not recyclable on a big enough scale yet. But, you can do your part to help keep the recycling system safe and strong, by keeping it clean and free of the wrong things. As a responsible recycler, you can be the **good guy** by keeping the **bad guys** away from and out of your recycle bin!

Here are the **Top 10 NOT Most Wanted** things that recyclers **DO NOT** want to see come into their facility:

1. Plastic Bags and Wraps, Pouches and Wrappers
2. Bagged Recyclables—recyclables should be in a recycle bin loose, **NEVER** in a plastic bag
3. Diapers—**NEVER, EVER** put in a recycle bin
4. Tanglers—electric cords/wires, headphones, garden hoses, metal chains/wire, Christmas lights
5. Batteries—especially Lithium Ion
6. Bulky Plastic Items—plastic furniture, laundry baskets, plastic playground sets, plastic toys, buckets/pails
7. Hangers—wire, metal and plastic
8. Window Panes, Mirrors and Drinking Glasses
9. Ceramics—pottery, dishes, plates, mugs
10. Light Bulbs/Fluorescent Tubes

Please do your part and make sure that the **Top 10 NOT Most Wanted** end up in a garbage can where they belong! Wondering who are the **Most Wanted** when it comes to recycling? Make sure you read Page 4 of this newsletter!

www.goglra.org

Printed on Recycled Paper with Soy-Based Ink



Municipal Curbside Recycling Programs

Annville Township: Annville Township contracts its waste and recycling services to Casella Waste Systems. Recycle bins are available at the Township Office at no charge. Acceptable items include: clear, green, and brown glass bottles and jars, metal food and beverage cans, plastic bottles and jugs ONLY, corrugated cardboard, and newspaper. Contact the Township Office at 717-867-4476 with questions or to report missed collections.

Cleona Borough: Residents of Cleona are asked to contact one of the licensed haulers to arrange for waste and recycling services. Acceptable items include: clear, green, and brown glass bottles and jars, metal food and beverage cans, plastic bottles and jugs ONLY, corrugated cardboard, and newspaper. Contact your waste hauler with questions you might have regarding waste or recycling. Contact the Borough Office at 717-272-7167 with any other questions.

Cornwall Borough: Residents of Cornwall are asked to contract recycling services through one of the licensed haulers. Recycle bins are available at the Borough Office at no charge. Acceptable items include: clear, green, and brown glass bottles and jars, metal food and beverage cans, plastic bottles and jugs ONLY, corrugated cardboard, and newspaper. Contact the Borough Office at 717-274-3436 with questions.

Jackson Township: Residents of Jackson Township must contract recycling services through one of the licensed haulers. Recycle bins are available at the Township Office at no charge. Acceptable items include: clear, green, and brown glass bottles and jars, metal food and beverage cans, plastic bottles and jugs ONLY, corrugated cardboard, and newspaper. Contact the Township Office at 717-866-4771 with questions.

Jonestown Borough: Residents of Jonestown Borough must contract recycling services through one of the licensed haulers. The Borough provides recycle bins to residents at no charge. Acceptable items include: clear, green, and brown glass bottles and jars, metal food and beverage cans, plastic bottles and jugs ONLY, corrugated cardboard, and newspaper. Contact the Borough Office at 717-861-5414 with questions.

Lebanon City: Residents of the City must contact one of the licensed haulers for waste and recycling services. The City provides recycle bins to residents at no charge. Acceptable items include: clear, green, and brown glass bottles and jars, metal food and beverage cans, plastic bottles and jugs ONLY, corrugated cardboard, and newspaper. For more



information on Lebanon City's recycling programs, visit www.lebanonpa.org or call Lebanon City Department of Public Works at 717-639-2800 Option 4.

Mount Gretna Borough: Mount Gretna Borough contracts its waste and recycling services to TNT Sanitation, Inc. (DBA Good's Disposal Service) Recycle bins are available at the Borough Office at no charge. Acceptable items include: clear, green, and brown glass bottles and jars, metal food and beverage cans, plastic bottles and jugs ONLY, corrugated cardboard, and newspaper. Contact the Borough Office at 717-964-3270 with questions.

Myerstown Borough: Residents of Myerstown must contract waste and recycling services through one of the licensed haulers. Recycle bins are available at the Borough Office at no charge. Acceptable items include: clear, green, and brown glass bottles and jars, metal food and beverage cans, plastic bottles and jugs ONLY, corrugated cardboard, and newspaper. Contact the Borough Office at 717-866-5038 with questions.

North Cornwall Township: Residents of North Cornwall Township must contract waste and recycling services through one of the licensed haulers. Recycle bins are available at the Township Office at no charge. Acceptable items include: clear, green, and brown glass bottles and jars, metal food and beverage cans, plastic bottles and jugs ONLY, corrugated cardboard, and newspaper. Contact Jean Long at the Township Office at 717-273-9200 with any questions.

North Lebanon Township: Residents of North Lebanon Township must contract directly with one of the licensed haulers for waste and mandated recycling services. Recycle bins are available at the Township Office at no charge. Acceptable items include: clear, green, and brown glass bottles and jars, metal food and beverage cans, plastic bottles and jugs ONLY, corrugated cardboard, and newspaper. Contact Bonnie Grumbine at 717-273-7132 with any recycling questions or concerns.



North Londonderry Township: Township residents may select any licensed hauler for waste and recycling services. Acceptable items include: clear, green, and brown glass bottles and jars, metal food and beverage cans, plastic bottles and jugs ONLY, corrugated cardboard, and newspaper. Please contact the Township Office at 717-838-1373 with any questions.

Palmyra Borough: The Borough contracts its weekly waste and recycling collection services to Casella Waste Systems. Casella Waste Systems provides borough residents with 96-gallon curbside carts for both waste and recycling. Acceptable items include: clear, green, and brown glass bottles and jars, metal food and beverage cans, plastic bottles and jugs ONLY, corrugated cardboard, and newspaper. Please contact the Borough Office at 717-838-6361 for any information.

Richland Borough: The Borough contracts waste and recycling services to Weidle Sanitation Service (DBA Good's Disposal Service). Acceptable items include: clear, green, blue, and brown glass bottles and jars, metal food and beverage cans, plastic bottles and jugs ONLY, corrugated cardboard, and newspaper. Contact the Borough Office at 717-866-5601 with any questions.

South Annville Township: Township residents may select any licensed hauler for waste disposal and recycling services. Acceptable items include: clear, green, and brown glass bottles and jars, metal food and beverage cans, plastic bottles and jugs ONLY, corrugated cardboard, and newspaper. Please contact the Township Office at 717-867-2846 with questions.

South Lebanon Township: Township residents must contract waste and recycling services with a licensed hauler. Free recycle bins are available at the Township Building. Acceptable items include: clear, green, and brown glass bottles and jars, metal food and beverage cans, plastic bottles and jugs ONLY, corrugated cardboard, and newspaper. Contact Mary Rivers at 717-274-0481 with any questions.

South Londonderry Township: Township residents must contract waste and recycling services through a licensed hauler. Free recycle bins are available at the Township Office. Acceptable items include: clear, green, and brown glass bottles and jars, metal food and beverage cans, plastic bottles and jugs ONLY, corrugated cardboard, and newspaper. Contact the Township at 717-838-5556 or visit www.southlondonderry.org with questions.

West Cornwall Township: Residents of West Cornwall Township may select one of the licensed haulers for waste and recycling services. Acceptable items include: clear, green, and brown glass bottles and jars, metal food and beverage cans, plastic bottles and jugs ONLY, corrugated cardboard, and newspaper. Call the Township at 717-272-9841 with any questions.

West Lebanon Township: West Lebanon Township contracts waste and recycling services to Weidle Sanitation Service (DBA Good's Disposal Service). Recycle bins are available at the Township at no cost. Acceptable items include: clear, green, and brown glass bottles and jars, metal food and beverage cans, plastic bottles and jugs ONLY, corrugated cardboard, and newspaper. Contact the Township Office at 717-274-1598 with questions.



Looking for a Waste Hauler for your Trash and Recycling Needs?

For a complete up-to-date list of licensed residential waste haulers who service Lebanon County, please visit our website at www.goglra.org and click on the **Waste Hauler Directory** graphic button on our homepage shown below.



Waste Hauler Directory

Recycle Right at the Curb

The most common misunderstanding the public has about **CURBSIDE** recycling is that you need to put as much as possible into your recycle bin. However, recycling is actually a system of collecting and processing used materials that still have value. This means **NOT** everything is recyclable. There must be someone to buy the used material and recycle it into a new product. Just because it has a recycling symbol on the bottom, **DOES NOT** mean it is recyclable. While most of us are well-intentioned, when we put materials that don't belong into the bin, we are actually contaminating the recycling stream. When you don't recycle right, this negatively impacts our environment and economy.

Below are the **CORRECT ITEMS** to put inside your curbside recycle bin to **RECYCLE RIGHT!**

- Metal Food and Beverage Cans (Aluminum and Steel)
- Plastic Bottles and Jugs **ONLY** (Check For The Neck)
- Newspaper (Clean and Dry)
- Glass Bottles and Jars (Clear, Green, Brown)
- Corrugated Cardboard (Clean, Dry, Must Be Flat, No Food Contact)

REMEMBER, ONLY put these **ITEMS** in your curbside recycle bin. Everything else should be put in the trash. If you aren't sure, just remember the simple phrase...**"WHEN IN DOUBT, THROW IT OUT!"**

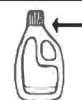
FOR ALL CURBSIDE RECYCLING



WHEN IN DOUBT → THROW IT OUT

NO Plastic Bags	NO Shredded Paper	NO Medical Waste
NO Food/Liquid	NO Clothing	NO Scrap Metal
NO Garden Hoses	NO Diapers	NO Styrofoam

**FOR ALL PLASTICS CHECK FOR THE NECK!
RECYCLE ALL PLASTIC BOTTLES, JUGS, & JARS
WITH AN OPENING SMALLER THAN THE BASE.**





Recycling Drop-Off Locations



Annville Township Residential Drop-Off	Public Works Dept. 675 West Main Street Annville Phone: 717-867-4476	Access Card Required <u>April through October</u> 7 AM - 7 PM <u>November through March</u> 7 AM - 5 PM	Corrugated Cardboard Metals Recycling (No Freon Appliances) Green Waste Recycling
Battery Warehouse	125 Schneider Drive Lebanon Phone: 717-273-8884	Mon through Fri 8 AM - 5 PM Sat 8 AM - 12 PM	Automotive • Motorcycle • Marine • RV Golf Cart • Lawn/Garden • Floor Scrubber Steel Case Industrial • Sealed Lead Acid NO LITHIUM • NO OTHER Batteries Accepted
CSR-Brandywine	328 North 14th Street Lebanon Phone: 717-272-4655	Mon through Fri 8 AM - 3 PM Sat 8 AM - 12 PM	Aluminum Cans • Ferrous Metals Non-Ferrous Metals • All Appliances Fee is \$15 Per Freon Appliance Corrugated Cardboard • Newspaper Office Paper • Plastics Commercial Businesses/Industries ONLY
Greater Lebanon Refuse Authority County Recycling Drop-Off Center	1800 Russell Road Lebanon Phone: 717-867-5790 Ext 307	Mon through Fri 7 AM - 3:50 PM Sat 8 AM - 11:45 PM	Aluminum Cans • Steel Cans • Clear, Green and Brown Glass • Newspaper Magazines • Mixed Office Paper • Phone Books • #1 PET Plastic Bottles • #2 HDPE Plastic Bottles • Corrugated Cardboard Clear #1 PET Thermoform Plastic ONLY Tires • All Appliances - Freon Included ■
Heidelberg Township Municipal Building	111 Mill Road Schaefferstown Phone: 717-949-3885	7 days a week From dawn to dusk	Corrugated Cardboard <u>ONLY</u> <u>MUST BE FLAT</u>
Lebanon City Recycling Drop-Off Center	14th & Lehman Streets Lebanon Phone: 717-639-2800 Option 4	<u>November 1 - February 28</u> Wed & Sat 8 AM - 3 PM Thur & Fri 11 AM - 4 PM <u>March 1 - October 31</u> Wed & Sat 8 AM - 3 PM Thur & Fri 12 PM - 5 PM	Aluminum Cans • Steel Cans • Clear, Green and Brown Glass • Newspaper • Magazines Mixed Office Paper • Corrugated Cardboard #1 PET Plastic Bottles • #2 HDPE Plastic Bottles
North Cornwall Township Recycling Drop-Off Center	320 South 18th Street Lebanon Phone: 717-273-9200	<u>Spring/Summer</u> Mon through Sun 7 AM - 7 PM <u>Fall/Winter</u> Mon through Sun 7 AM - 5 PM	Corrugated Cardboard • Newspaper Mixed Paper (office paper, junk mail, magazines, phone books)
North Lebanon Township Municipal Building	725 Kimmerlings Road Lebanon Phone: 717-273-7132	7 days a week From dawn to dusk	Newspaper • Corrugated Cardboard Office Paper • Magazines • Catalogs Glossy Paper
North Londonderry Township Municipal Building	655 East Ridge Road Palmyra Phone: 717-838-1373	7 days a week From dawn to dusk	Newspaper • Corrugated Cardboard Mixed Paper (office paper, junk mail, paperboard)
Palmyra Borough Public Works Facility	910 East Broad Street Palmyra Phone: 717-838-6361	Borough Residents <u>ONLY</u> 7 days a week 24 hours a day	Corrugated Cardboard <u>ONLY MUST BE FLAT</u> Magazines Dumpsters are Located Outside the Gate
South Lebanon Township Recycling Drop-Off Center	3 Linden Road Lebanon Phone: 717-274-0481	7 days a week <u>April through September</u> 7 AM - 8 PM <u>October through March</u> 7 AM - 5 PM	Aluminum Cans • Steel Cans <u>NO SCRAP</u> Mixed Paper (includes office paper, magazines, junk mail, paperboard, and shredded office paper--- <u>NO BAGS</u>) Corrugated Cardboard <u>MUST BE FLAT</u>
Union Township Recycling Drop-Off Center Lickdale	Union Township Building 3111 State Route 72 Jonestown Phone: 717-865-4039	Access Card Required Mon through Fri 6:30 AM - 6:00 PM Sat 8 AM - 4 PM	Aluminum Cans • Steel Cans • Clear, Green and Brown Glass • Newspaper • Magazines Corrugated Cardboard • Mixed Office Paper #1 through #7 Plastic Bottles ONLY Scrap Metal • Green Waste Recycling





B O A T Recyclers

If you are looking for a place to dispose of old auto batteries, used motor oil, antifreeze or tires, here's a list of area businesses in Lebanon County that will recycle one or more of these hard to dispose of items. Depending on where you go or depending on the item, a small disposal fee may be required. Please call in advance to inquire about any fees for disposal.

ALL ITEMS MUST BE DROPPED OFF DURING NORMAL BUSINESS HOURS

B = AUTO BATTERIES

O = MOTOR OIL

A = ANTIFREEZE

T = TIRES

ANNVILLE

Annville Equipment Co. B & O
470 Palmyra-Bellgrove Rd. 717-867-4631

BHM Farm Equipment Inc. B & O
683 N. Route 934 717-867-2211

CLEONA

Henise Tire Service Inc. O & T
558 E. Penn Ave. 717-272-2102

LEBANON

Autohaus Lebanon Volkswagen B
1250 Chestnut St. 717-500-3520

Advance Auto Parts B, O, A
801 Bowman St. 717-273-4001

Advance Auto Parts B & O
1450 Cumberland St. 717-306-4201

Auto Zone B & O
2515 Cumberland St. 717-274-8994

Auto Zone B & O
101 N. 11th Ave. 717-228-1900

Bamberger's Inc. B, O, T
122 Schneider Dr. 717-272-6641

Battery Warehouse B
125 Schneider Dr. 717-273-8884

Campbell's Service Center B, A, T
157 N. 9th St. 717-273-4662

CSR-Brandywine B
328 N. 14th St. 717-272-4655

Diversified Auto & Repair B, O, A, T
812 Horseshoe Pike 717-867-2221

Firestone Tire & Service B, O, A, T
1143 Quentin Rd. 717-273-8111

Fox's Transport T
350 N. 18th St. 717-274-8876

Greater Lebanon Refuse Authority T
1800 Russell Rd. 717-867-5790

Lebanon Auto Clinic B, O, T
421 E. Walton St. 717-274-8380

Leiss' Garage B, O, A, T
1834 Lehman St. 717-274-2027

Market Square Svc Station B & T
31 N. 9th St. 717-274-9896

Simon S. Kettering & Sons B & T
1599 Cumberland St. 717-272-5771

Tim Wolfe's Automotive B, O, A, T
1358 Cumberland St. 717-273-7051

Zimney's Automotive B, O, A, T
564 Horseshoe Pike 717-867-1644

MYERSTOWN

Advance Auto Parts B & O
119 W. Lincoln Ave. 717-866-5741

PALMYRA

Advance Auto Parts B, O, A
700 E. Main St. 717-838-4080

Auto Zone B & O
1099 E. Main St. 717-832-8102

Dayne's Automotive Center B, O, T
328 E. Main St. 717-838-5321

Klick-Lewis, Inc. B, O, A, T
720 E. Main St. 717-838-1353

RICHLAND

Agriteer-Richland B, O, A
700 E. Linden St. 717-740-5644

GLRA has prepared this list based on the best information available at the time and does not endorse any of the companies listed above, the views they express, nor the products or services they offer.

SHRED THE WORD!
FREE Paper Shredding Event
Coming Summer 2026!
Look for the official date and more specific details about the paper shredding event on GLRA's website beginning May 2026!





A Composting Guide for
Lebanon County Residents

2025 - 2026

The Scoop



Leaf and yard waste is something every homeowner eventually needs to dispose of. Did you know that if you live in a community that is mandated to recycle, that it is illegal to throw leaf and yard waste out with the trash? A waste hauler is not allowed to collect any leaf or yard waste with the trash in a mandated community. By throwing it away with the normal trash, we are sending it to a landfill where it is using up unnecessary landfill space meant for trash that cannot be recycled. Leaf and yard waste can be recycled into compost which can be used over and over again as food for the earth. Leaves, branches and garden wastes can be composted into a rich soil additive called humus which naturally fertilizes the soil.

This newsletter is intended to provide you with helpful information when you are raking those leaves and cleaning up the yard. Inside, you will find information on municipal leaf and yard waste collection programs that exist in Lebanon County. If your Township or Borough is not listed in this newsletter, then it does not have a program for leaf or yard waste. If your municipality does not have a program, we have provided information in the box to your right on how to dispose of your leaf and yard waste.

Annville Township

Leaf Collection and Yard Waste Drop-Off

Annville Township provides a curbside leaf collection program for its residents weekly from October to early December. Leaves must be placed loose along the curb and will **NOT** be picked up if placed in bags. A yard waste drop-off facility is available, year-round, weather permitting, at Annville Public Works Department, 675 West Main Street, for Annville Twp, South Annville Twp, North Annville Twp and Cleona Boro residents. An access card is required. Yard Waste Facility hours are 7 a.m. to 5 p.m. from November-March and 7 a.m. to 7 p.m. from April-October. Contact the Township Office, 36 North Lancaster Street, at 717-867-4476 or in person for information.

Cleona Borough

Leaf Collection

Cleona Borough arranges for leaf collection for its residents. For details on leaf collection, residents are asked to check the website www.cleonaborough.org or contact the Borough Office by phone at 717-272-7167.

No Program? No Problem!

Leaf and Yard Waste Disposal at GLRA

Any resident or business of Lebanon County may dispose of leaf and yard waste at GLRA's Compost Facility located at 1800 Russell Road, Lebanon. The cost to dispose of leaf and yard waste is **\$18** for up to **1000 pounds** or **\$36/ton**. A GLRA license is required. A tarp is required.

GLRA Business Hours to Drop Off

Monday - Friday	7:00 AM - 3:50 PM
Saturday	8:00 AM - 11:45 AM

GLRA **ONLY** accepts the following materials:

Leaves
Shrubbery
Branches
Grass Clippings
Tree Trimmings
Garden Residue
Tree Limbs Under 4 Inches in Diameter

Cleona Borough residents also have the option to drop yard waste either at North Cornwall Township Yard Waste Drop-Off Facility or Annville Township Drop-Off Center after paying an annual fee to the respective municipality. Residents must first obtain an address verification form from the Cleona Borough Office.

Cornwall Borough

Leaf Collection

Cornwall Borough provides curbside leaf collection for its residents beginning in October and ending in December. The Borough Highway Department will pick up leaves in all areas except ones zoned Residential Forest. Residents can obtain the leaf collection schedule online at www.cornwall-pa.com. The Borough also offers a Christmas tree drop-off in a designated area at the Highway Garage from January 1 to mid February. Trees ten feet or more must be cut in half and be cleaned of **ALL** decorations! Christmas tree bags **WILL NOT** be accepted. Contact the Borough Office at 717-274-3436 with any questions.

Jackson Township

Leaf and Yard Waste Collection

Jackson Township provides a leaf collection program in the Fall from the mid October to early December. Yard waste (branches, brush, sticks and twigs) is collected one day in April and one day in October. A detailed postcard, Jackson Township Recycling News, is available at the Township Office and on the homepage of the Township's website www.jacksontownship-pa.gov. Contact the Jackson Township Office at 717-866-4771 with any questions.

Jonestown Borough

Yard Waste Compost Facility

Jonestown Borough operates a municipal yard waste compost facility for Borough residents AND businesses and a limited number of Swatara and Union Township RESIDENTS ONLY. There is a \$35 annual fee for Jonestown Borough residents and businesses and a \$50 annual fee for Swatara and Union Township RESIDENTS ONLY, renewable every January 1, for key card to access the facility. An additional \$5 fee is required for the key card at its initial issuance. To replace a lost key card, the cost is \$5. The key card allows unlimited access to the facility from dusk to dawn. Contact the Borough Office at 717-861-5414 with questions.

Jonestown Borough

Christmas Tree Collection

Christmas trees are collected after the holidays. Download the Jonestown Borough Mobile App, *Jonestown Connects*, or visit www.jonestownpa.org for details regarding the Christmas tree collection program. Please contact the Borough Office at 717-861-5414 with any questions.

Lebanon City

Leaf and Yard Waste Collection

Lebanon City conducts an 8-Week Fall and a 2-Week Spring curbside leaf collection program annually for its residents. Also, in the Fall and Spring of each year, generally in October and in April, the City will collect yard waste curbside. Prior to all collection events, Lebanon City will post all published announcements, collection schedules, and collection guidelines on the City's website www.lebanonpa.org. For additional questions, please contact Lebanon City Department of Public Works at 717-639-2800 Option 4.

Lebanon City

Yard Waste Compost Facility

Lebanon City operates a municipal yard waste compost facility for City residents and businesses ONLY. An access card is required to enter the facility. The initial fee for a yearly residential access card is \$40. The annual renewal fee is \$35. The annual fee for an access card for commercial use is \$500. There's a \$25 replacement fee for misplaced/lost cards. An access card allows unlimited access to the facility within the scheduled hours. Hours for the

facility are as follows: March through October, open daily, 7:00 a.m. to 7:00 p.m. and November through February, open daily, 8:00 a.m. to 5:00 p.m. For an access card application and a list of rules and guidelines for the facility, contact the Lebanon City Department of Public Works at 717-639-2800 Option 4.

Mount Gretna Borough

Leaf and Yard Waste Collection

Mount Gretna Borough has a seasonal leaf and yard waste collection program. Leaves and brush are collected two times a year---in the Spring and in the Fall. The Borough sends a letter to all its residents providing details for the seasonal collection. Visit <https://borough.mtgretna.com/> online to access the leaf and brush collection schedule. Contact the Borough Office at 717-964-3270 with questions.

Myerstown Borough

Leaf, Yard Waste and Christmas Tree Collection

Myerstown Borough provides curbside leaf collection for its residents on a weekly basis from October to December. All leaves MUST be placed at the CURB in CLEAR PLASTIC BAGS and WILL NOT be collected unless placed in clear plastic bags! Christmas Trees are collected curbside after the holidays through mid January of each year. All Christmas Trees MUST be placed CURBSIDE and WILL NOT be collected at the rear of any properties. The Borough also provides a Spring curbside yard waste collection from mid April until mid May. Acceptable yard waste consists of leaves and small sticks. Spring yard waste MUST be placed at the CURB in CLEAR PLASTIC BAGS and WILL NOT be collected unless placed in clear plastic bags! All items listed above MUST be placed at the CURB for pick up NO LATER than 7:00 a.m. on collection day. The Borough also collects larger branches and tree limbs WITHIN CERTAIN SIZE LIMITATIONS upon request from residents and AFTER inspection by a Borough Public Works Department employee. To make arrangements for this service, residents MUST contact the Public Works Department at 717-866-6948 and leave a message with name, address, phone number, and best time to contact. Clear plastic bags are available at the Borough Office for \$0.25 per bag. Public notices for all of the above programs are published in local newspapers. Contact the Borough Office at 717-866-5038 with questions.

North Cornwall Township

Leaf and Yard Waste Collection

North Cornwall Township provides a leaf collection program from the end of October to early December. Yard waste (which includes garden waste, shrubbery clippings, tree trimmings and woody yard waste) is collected two times a year during the beginning of April and October. Detailed handouts are available at North Cornwall Township's Office and on its website www.nctown.org. Contact the Township Office at 717-273-9200 with questions.



North Cornwall Township Yard Waste Drop-Off Facility

North Cornwall Township operates a municipal yard waste drop-off facility for North Cornwall Township and Cleona Borough residents ONLY. Residents of Cleona Borough must first complete a residency verification form with the Cleona Borough Office. There is a \$30 annual fee, renewable every January 1, for a key card to access the facility. A \$5 deposit is required on the key card at its initial issuance. A key card allows unlimited access to the facility within the scheduled hours. Spring/Summer hours are Monday through Sunday 7:00 a.m. to 7:00 p.m. Fall/Winter hours are Monday through Sunday 7:00 a.m. to 5:00 p.m. All loads must be tarped. Small quantities can be dropped off using Pay As You Go. Residents may bring in yard waste in bags or containers (35 gallons or less) and pay \$5 each. Hours for Pay As You Go are ONLY during Township business hours. Methods of payment include: check, money order, debit card or credit card (processing fee added for debit/credit cards). NO cash. For an application and a list of rules for the facility, contact the Township Office at 717-273-9200.

North Lebanon Township Leaf and Yard Waste Collection

North Lebanon Township collects leaves curbside from mid October to December. Yard waste is also collected a day in April and a day in October. North Lebanon Township will publish dates, times and collection instructions in the Township's quarterly newsletter and also on its website. For additional information, contact the Township Office at 717-273-7132 or visit www.northlebanontwppa.gov.

North Lebanon Township Yard Waste Compost Facility

North Lebanon Township operates a municipal yard waste compost facility for Township residents ONLY. There is an annual fee, determined by the Board of Supervisors, renewable every January 1, for key card to access the facility. The fee for 2025 is \$50, allowing unlimited access to the facility and mulch within the scheduled hours. Spring/Summer hours are Monday through Saturday 7:00 a.m. to 8:00 p.m. and Sunday 12 p.m. to 8 p.m. Fall/Winter hours are Monday through Saturday 7:00 a.m. to 5:00 p.m. and Sunday 12 p.m. to 5 p.m. Loading and delivery services are available for a fee. All incoming and outgoing loads must be tarped. For a key card application and a list of rules/regulations for the facility, contact the Township Office at 717-273-7132 or visit the Township online at www.northlebanontwppa.gov.



North Londonderry Township Leaf Collection and Curbside Chipping

North Londonderry Township provides weekly curbside leaf collection to residents on most public roads in the Spring and Fall. Spring collection runs from the end of March to the beginning of April. Fall leaf collection occurs from mid October through the first week of December. North Londonderry Township also provides a monthly yard waste chipping program for its residents. On the 1st Monday of each month (except November and December) brush and branches are collected and chipped curbside on most public roads in the Township. The Township also provides an additional collection of Christmas trees in January. Residents can access the municipal newsletter at www.nlondtwp.com for information regarding the collection schedule and procedures. Contact the Township Office at 717-838-1373 with any questions.

North Londonderry Township Yard Waste Compost Facility

North Londonderry Township operates a municipal yard waste compost facility for North Londonderry Township residents ONLY (commercial businesses and non-residents are prohibited). North Londonderry Township charges an annual fee for residents to use the drop-off center. Hours of access to the facility are: April through October, Monday through Saturday 7:00 a.m. to 8:00 p.m. and Sunday 12:00 p.m. to 8:00 p.m.; November through March, Monday through Saturday 7:00 a.m. to 5:00 p.m. and Sunday 12:00 p.m. to 5:00 p.m. Residents are required to visit the North Londonderry Township Office to purchase or renew an access card. Contact the Township Office at 717-838-1373 with questions or visit www.nlondtwp.com for additional information on North Londonderry Township's residential yard waste facility.

Palmyra Borough Leaf and Yard Waste Collection

Curbside leaf and yard waste collection is provided to all residents. Yard waste is collected by the Borough's contracted hauler, Casella Waste Systems, during 18 specially scheduled weeks between March and December. Yellow 25-gallon yard waste containers may be purchased for \$18 at the Borough Office. Christmas trees are also collected by Casella Waste Systems during two specially scheduled collection weeks in January. Wood waste (branches larger than 1-inch in diameter) is chipped curbside by the Borough Public Works Crew the last full week of each month from April through November on the same day as the refuse and recycling collection schedule. Leaves are also collected by the Palmyra Borough Public Works Crew. Spring leaf collection is offered for one week in March and one week in April. Fall leaf collection is conducted weekly from mid-October to mid-December.



Collection schedule information is available online at www.palmyraborough.org and also in the Borough newsletter mailed with the quarterly sewer and refuse bills. Contact the Borough Office at 717-838-6361 with any questions.

Richland Borough Leaf Collection

Leaf collection begins on October 25 and ends December 17 OR will cease on the first measurable snowfall, whichever comes first. Leaf collection days will be Monday and Thursday each week. Please have leaves curbside by 9:00 a.m. Leaf collection is dependent on weather, in case of inclement weather, leaves will be collected the next nice day. Contact the Richland Borough Office at 717-866-5601 with questions or visit www.richlandborough.org/services/.

South Annville Township Leaf Collection and Yard Waste Drop-Off

For a fee, South Annville residents may dispose of yard waste at Annville Township Public Works Department, 675 West Main Street, Annville. To use Annville's drop-off facilities, South Annville residents must first purchase an access card at the Annville Township Office, 36 North Lancaster Street, Annville. Hours to drop off are 7:00 a.m. to 5:00 p.m. from November-March and 7:00 a.m. to 7:00 p.m. from April-October. Contact the South Annville Township Office at 717-867-2846 with any questions.

South Lebanon Township Leaf and Yard Waste Collection

Leaf and yard waste are collected curbside from South Lebanon Township residents twice a year. One combined leaf and yard waste collection is conducted in April. Fall leaf collection runs from mid October to the end of November with no set days for any area. Yard waste is collected curbside once in the Fall prior to leaf collection. All collection dates will be published in the Township's newsletter and on its website www.twp.south-lebanon.pa.us. For additional questions, contact the Township Office at 717-274-0481.

South Lebanon Township Yard Waste Compost Facility

South Lebanon Township operates a municipal yard waste compost facility. Access cards to the facility are available for a \$40 annual fee for South Lebanon Township residents and a \$50 annual fee for Cornwall Borough, Heidelberg Township, and West Cornwall Township residents---renewable every January 1. The access card allows unlimited access to the facility within the scheduled hours (7 days a week): April to September 7:00 a.m. to 8:00 p.m. and October to March 7:00 a.m. to 5:00 p.m. All loads must be tarped. For an application and list of rules and regulations for the facility, contact the South Lebanon Township Office at 717-274-0481 or visit the website at www.twp.south-lebanon.pa.us.



South Londonderry Township Leaf, Yard Waste, and Christmas Tree Collection

South Londonderry Township plans to have seasonal leaf, yard waste, and Christmas tree collection programs for 2025/2026. Please visit www.southlondonderry.org for more specific details on each of these programs. Christmas trees will be accepted at two designated areas: the Township's Highway Building or Lawn Fire Company AFTER Christmas Day. Specific dates will be posted on the website.

West Cornwall Township Leaf Collection

West Cornwall Township provides a leaf collection program for approximately six weeks in the Fall and for two weeks in early Spring. Leaf collection notices are on the Township's website, www.westcornwalltwp.com. For more information, please contact the Township Office at 717-272-9841.

West Lebanon Township Yard Waste Compost Facility

West Lebanon Township operates a municipal yard waste compost facility for West Lebanon Township residents and businesses ONLY. There is a \$35 annual fee for residents and a \$500 annual fee for businesses for a key card to access the facility. The key card allows Township residents and businesses unlimited access to the yard waste compost facility within the scheduled hours. Hours of operation for the yard waste compost facility are Monday through Sunday from 7:00 a.m. to 9:00 p.m. All incoming loads must be tarped. For a key card application and a list of rules and regulations for the facility, contact the West Lebanon Township Office at 717-274-1598. Office hours are Monday through Thursday from 9:00 a.m. to 1:00 p.m.

2025-2026 Plant Bedding ONLY



Wood Mulch NOT Available Daily Loading Schedule

MONDAYS	8:00 am to 11:00 am
TUESDAYS	8:00 am to 11:00 am
WEDNESDAYS	8:00 am to 11:00 am
THURSDAYS	8:00 am to 11:00 am
FRIDAYS	8:00 am to 11:00 am
SATURDAYS	8:30 am to 11:30 am

**Only \$12 per cubic yard
A Tarp is Required**

Recycle Your Old Electronics for FREE

The Greater Lebanon Refuse Authority offers year-round FREE electronics recycling to Lebanon County Residents! The facility is located at 1805 Russell Road, in North Lebanon Township, and will accept old televisions, computers, and computer peripherals from Lebanon County residents for FREE! The facility is open weekdays from 8:00 a.m. to 3:30 p.m. and Saturdays from 8:30 a.m. to 11:30 a.m. Please read the list of **ACCEPTABLE** and **UNACCEPTABLE** items provided below.

RULES FOR DROPPING OFF ELECTRONICS

See the **COMPLETE** list of acceptable electronic devices below. If it is **NOT** on the list, then it is **NOT ACCEPTABLE**.

No assistance will be given to unload. You must be able to unload materials safely and properly. If that requires bringing 2 or 3 individuals along to unload an oversized item, then you must do so.

There is no advanced scheduling. GLRA has implemented a **5 PER DAY RULE**. Individual residents, commercial businesses, manufacturers and institutions may bring in up to a **MAXIMUM** of **5** computers and/or televisions **PER DAY**. Truckloads and large quantities are no longer accepted and will be turned away. Everyone is subject to the **5 PER DAY RULE. NO EXCEPTIONS.**

ACCEPTABLE ELECTRONIC DEVICES THAT WE TAKE FOR FREE

- All Computers and PCs (Desktops, Laptops, Notebooks, Chromebooks, Tablets, iPads, and Servers)
- All Computer Monitors and TVs (CRT, LCD, LED, Plasma, Flat screen, Projection, Console)
- Computer Peripherals: Keyboards, Mice, Computer Speakers, and External Hard Drives/Devices
External Devices include: CD/DVD/Blu-Ray ROM/Burners, Scanners, Wireless Routers/Switches, Modems, and External Tape, Optical, and Hard Disc Drives
- Printers: Desktop Printers, Dot Matrix, Inkjet, Laser, All in Ones (Printer-Scanner-Fax Combos)
- Cell Phones, PDAs, Smart Phones/Watches, Mobile Devices, Hand-held PCs, MP3 Players, Fitbits
- All Electronic Cables and Wiring
- Video Games, Gaming Consoles, and Controllers
- Power Supplies, UPS (Uninterruptible Power Supplies, USB Ports/Drives, Battery Back Ups)

UNACCEPTABLE ITEMS THAT SHOULD BE DISPOSED OF IN THE REGULAR TRASH:

Stereo • Radio • Boom Box • Digital Clock • Copy Machine • Fax Machine • Calculator • Typewriter • CD Player VCR • DVR • DVD Player • Toaster/Toaster Oven • Stereo Speakers • Answering Machine • Sweeper Vacuum • Iron • Smart Board • Hair Dryer • Hand Mixer • Stand Mixer • Blender • Microwave Oven Coffee Maker • Keurig • Small Satellite Dish • Cable Box • Console Stereo • Christmas Tree String Lights





Battery Recycling Leading the Charge Recycle Clean. Recycle Right.

Greater Lebanon Refuse Authority accepts all rechargeable and single-use batteries for FREE at its Electronics Recycling Facility, located at 1805 Russell Road, in North Lebanon Township.

RECHARGEABLE BATTERIES are commonly found in cordless power tools, cordless phones, laptops, cell-phones, cameras, two-way radios, and medical equipment (portable glucose monitor, thermometer, etc.).

SINGLE-USE BATTERIES cannot be recharged and must be disposed of once they wear out. Single-Use batteries are most commonly used in low-drain devices, such as flashlights, clocks, watches, remote controls, smoke detectors, keyless entry remotes, toys, and hearing aids.

EACH individual battery MUST BE under 11 POUNDS AND 300Wh to be accepted. EACH individual battery MUST BE placed in an INDIVIDUAL clear plastic storage bag—ONLY ONE BATTERY PER BAG.

WHY DO I HAVE TO BAG MY BATTERY TO RECYCLE IT?



Batteries may hold a residual charge even when they appear dead. When this battery comes into contact with other batteries or metal, a spark or heat can occur. Unprotected battery terminals are dangerous. Sparks and heat can cause smoke, fires and explosions resulting in property damage or physical injury.

Bagging is the quickest and easiest way to protect battery terminals. Remember ONLY ONE battery per clear storage bag! No matter how tedious that sounds, that is the rule if you want to recycle your batteries for FREE at our location. Clear plastic storage bags ARE AVAILABLE FOR FREE at our battery recycling station located in the Electronics Recycling Facility at 1805 Russell Road, AND ALSO at your Municipal Office.

Batteries can be dropped off at the Electronics Recycling Facility weekdays from 8:00 a.m. to 3:30 p.m. and Saturdays from 8:30 a.m. to 11:30 a.m. There is a LIMIT of 50 BATTERIES PER VISIT PER CUSTOMER.

Rechargeable Batteries

- Small Sealed Lead Acid (SSLA/Pb)
- Nickel Metal Hydride (Ni-MH)
- Nickel Cadmium (Ni-Cd)
- Lithium Ion (Li-Ion)
- Nickel Zinc (Ni-Zn)



Single-Use Batteries

- Alkaline (AA, AAA, 6V, 9V, C, D, Button Cells)
- Lithium Primary—including the following:
Lithium-Iron Disulfide (Li-FeS₂)
Lithium-Sulfur dioxide batteries (LiSo₂)
Lithium-Thionyl Chloride (LiSOCl₂, LTC)
Lithium-Manganese Dioxide (LiMnO₂, Li-M)



Lebanon County's Home Collection of Household Hazardous Waste

1-800-742-5542 Ext 123 or www.mxiinc.com/lebanon

Lebanon County Residents, are you looking for information on how to properly dispose of old lawn and garden chemicals, automotive fluids, paints, pesticides and poisons? These are items that you cannot put out with the regular trash, pour down a drain, or dump into the ground in the backyard. GLRA sponsors an at home collection of Household Hazardous Waste for Lebanon County residents for **ONLY a \$15 Co-Pay!**

The quantity of material that can be collected per pick-up is limited to the items that can be safely placed inside the kit/bag. The only exception to any materials being placed outside the kit/bag are fluorescent tubes/bulbs (limit of 5) and an automotive battery (limit of 1).

To schedule an at home collection of household hazardous waste, call Lebanon County's Household Hazardous Waste Hotline at **1-800-742-5542 Extension 123** or visit www.mxiinc.com/lebanon.



DUE TO FUNDING, THERE IS A LIMIT OF ONE PICK-UP PER HOUSEHOLD PER YEAR.

ACCEPTABLE HHW MATERIALS

Adhesives • Aerosols • Art/Hobby Supplies • Automotive Fluids • Auto Batteries
Household Batteries • Cleaners • Waxes • Flammables • Lubricants • Poisons
Lawn/Garden Chemicals • Paint • Thinners • Stains • Varnishes • Gasoline
Mercury Thermometers • Mercury Thermostats • Fluorescent Tubes • Kerosene
Compact Fluorescent Bulbs • Rubbing Alcohol • Degreaser • Spot Remover
Nail Polish • Nail Polish Remover

UNACCEPTABLE HHW MATERIALS

Biohazardous Waste • Needles • Pharmaceutical Waste • Municipal Solid Waste
Ammunition • Explosives • Fire Extinguishers • Gas Cylinders • Radioactive Waste
Smoke Detectors • TVs • Refrigerator • Freezer • Water Heater • Stove • Washer
Dryer • Air Conditioner • Dehumidifier • Scrap Metal • Electronics • Microwave
Containers Larger than 5 Gallons • Unidentified Materials • Unmarked Containers



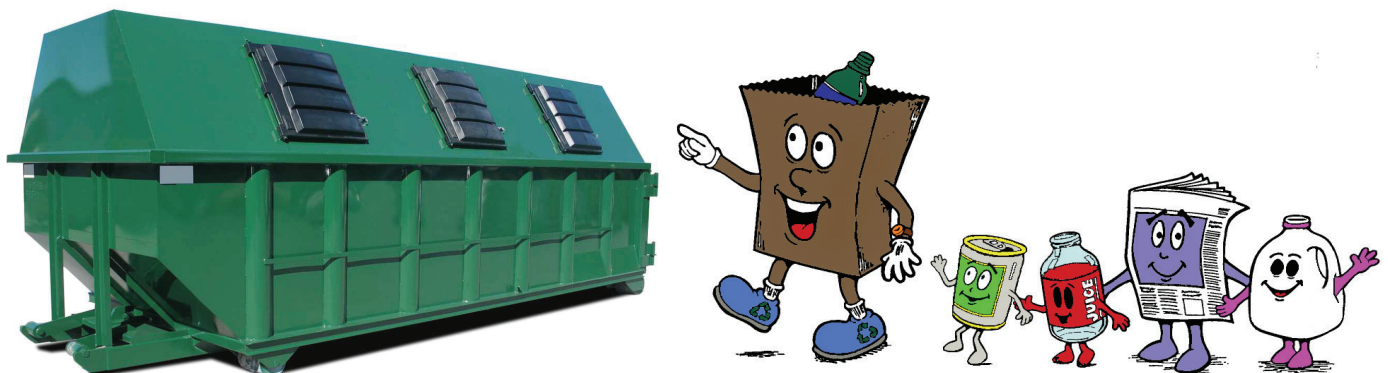
GLRA's Savings Center is Lebanon County's One-Stop Recycling Drop-Off Center

The Greater Lebanon Refuse Authority (GLRA) hosts a FREE county-wide recycling drop-off center at its facility located at 1800 Russell Road, Lebanon, 17046. GLRA's Savings Center is open to all Lebanon County residents during its normal business hours: Weekdays 7:00 a.m. to 3:50 p.m. and Saturday 8:00 a.m. to 11:45 a.m. GLRA's Savings Center is quick and easy to use with large roll-off containers distinctly labeled for each of the individual materials that are collected. The center is also staffed, so there is always someone there to answer any questions a resident may have.

It is important to note that all materials are collected separate from each other. There is a bin specifically for each individual item. There is no mixing of materials. If you mix materials in our bins, then you are contaminating our recycling center.

Listed below are the individual bins for the specific materials accepted at GLRA's Savings Center:

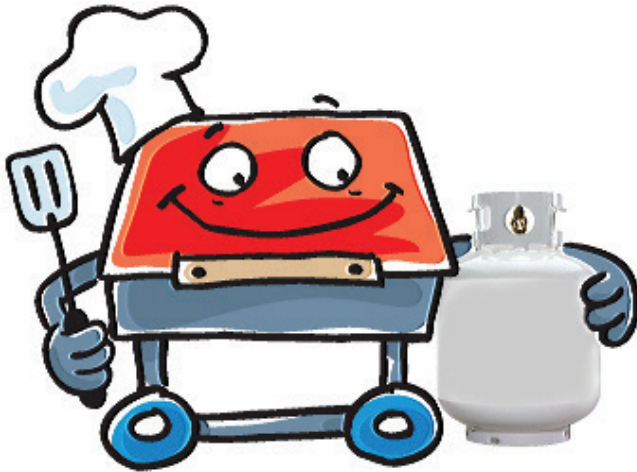
- **#1 PET Plastic Bottles ONLY --- NO #1 CLEAR PET PLASTIC THERMOFORM PACKAGING!**
- **#1 Clear PET Plastic Thermoform Packaging ONLY --- NO #1 PET BOTTLES!**
- **#2 HDPE Frosted Plastic Bottles ONLY**
- **#2 HDPE Colored Plastic Bottles ONLY**
- **Clear Glass Bottles & Jars (Food/Beverage ONLY)**
- **Green Glass Bottles & Jars (Food/Beverage ONLY)**
- **Brown Glass Bottles & Jars (Food/Beverage ONLY)**
- **Aluminum Cans (Food/Beverage ONLY)**
- **Steel Cans (Food/Beverage ONLY)**
- **Corrugated Cardboard (Must Be Flat)**
- **Magazines/Catalogs**
- **Newspaper/Phone Books**
- **Mixed Office Paper/Junk Mail**



What Do You Think of Our Newsletter?

Please let Lebanon County Recycling Coordinator [Amy Mazzella di Bosco](#) know!
Give her a call at 717-867-5790 Ext. 307 or send her an email at info@goglra.org.

FREE Propane Tank Recycling



We accept **OLD EMPTY** propane tanks/cylinders at GLRA's Recycling Center located at 1800 Russell Road. We will **ONLY** accept **EMPTY** propane tanks/cylinders from 1# to 100# pounds.

Residential Tire Recycling at GLRA

GLRA recycles tires from Lebanon County residents **ONLY**. There is a limit of up to 10 tires per residential customer. A GLRA license is required. We only accept rubber tires (steel belted or bias). Tires must be off the rim.

TIRE FEES

BICYCLE	\$ 1.00 each
MOTORCYCLE	\$ 2.00 each
CAR (12" to 17")	\$ 4.00 each
TRUCK (15" to 17")	\$ 6.00 each
TRUCK (18" to 23")	\$12.00 each

All Farm, Tractor & Heavy Equipment Tires will be weighed at 20¢ per pound.



Staples 

RECYCLE BATTERIES

Single-Use Batteries **NEW**
Rechargeable Batteries

No Wet-Cell or Heavy Batteries Over 11 lb.



call2recycle®

Leading the charge for recycling.™

HIGH ENERGY BATTERIES

call2recycle® High Energy Program
for Batteries **OVER 300** Watt-hours
Participating Brands Only



1755 Quentin Rd
Lebanon, PA 17042-7491
(717) 228-3300

CFL Bulb Recycling Drop-Off Locations



**GREATER LEBANON
REFUSE AUTHORITY**
1800 Russell Road
Lebanon, PA 17046
(717) 867-5790
8 AM to 3 PM Mon-Fri

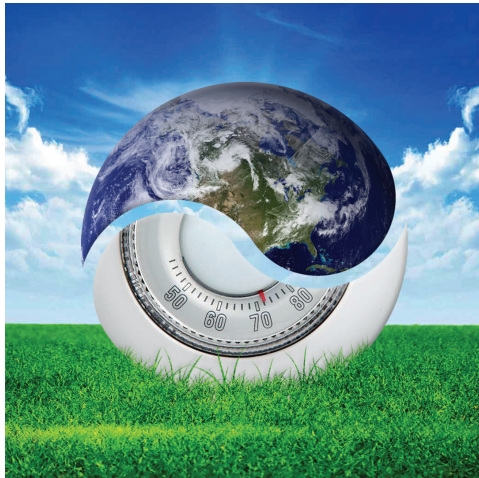
HOME DEPOT #4141
801 East Walnut Street
Lebanon, PA 17042
(717) 273-4829
6 AM to 10 PM Mon-Sat
8 AM to 8 PM Sun

LOWE'S #0022
1755 Quentin Road
Lebanon, PA 17042
(717) 228-3300
6 AM to 10 PM Mon-Sat
7 AM to 8 PM Sun

LOWE'S #2584
70 North Londonderry Square
Palmyra, PA 17078
(717) 473-2030
6 AM to 10 PM Mon-Sat
7 AM to 8 PM Sun

**TO PREPARE COMPACT FLUORESCENT LIGHT BULB FOR RECYCLING,
PLACE CFL IN A ZIPLOCK BAG.**

LIMIT of up to 10 CFL bulbs per visit per location.



FREE Thermostat Recycling

We **ONLY** accept
old mercury thermostats
at GLRA's Office
located at 1800 Russell Road.
Please bring in a ziplock bag.

call2recycle®

Leading the charge for recycling.™

www.call2recycle.org

Rechargeable Battery Recycling

Accepted Rechargeable Battery Chemistries
Dry-Cell Batteries up to 11lbs per Battery
These include **ONLY**:

- Nickel Cadmium (Ni-Cd)
- Nickel Metal Hydride (Ni-MH)
- Nickel Zinc (Ni-Zn)
- Lithium Ion (Li-ion)
- Small Sealed Lead (SSLA/Pb)



GLRA	1805 Russell Rd.	Lebanon
Home Depot	801 E. Walnut St.	Lebanon
Lowe's	1755 Quentin Rd.	Lebanon
Lowe's	70 N. Londonderry Sq.	Palmyra
Staples	1820 Quentin Rd.	Lebanon

