



GREATER LEBANON

REFUSE AUTHORITY

1800 Russell Road • Lebanon PA 17046

Facility Information & Program Guide

Refuse Report

2026



Purpose in Every Acre

When most people think of a landfill, “nature preserve” probably isn’t the first phrase that comes to mind. Visitors, however, are often surprised at how much GLRA looks like one with the green rolling hills and diverse wildlife. This outcome is no accident. The GLRA’s mission has always been clear: to manage and dispose of Lebanon County’s waste in a manner that protects the health and safety of the public, our workers, and the quality of the environment. Environmental protection isn’t a side effect of what we do; it’s the foundation of how we do it.

This foundation of environmental stewardship starts with the land itself. Of the 500 acres we own, just 168 contain trash. Even more surprising: only 63 acres have accepted waste in the past 30 years (less than 15% of the total). The remaining 437 acres are intentionally maintained for the citizens, farmers, and wildlife of Lebanon County.

And that’s just the foundation; the fun begins when giving back to the community. In the late 90s, the GLRA opened a walking trail to give back to the neighborhood and to preserve a piece of local history. In 2025, the trail was revitalized with a longer path, new amenities like benches, and a cleanup of the three canal locks featured along the trail. Looking ahead to 2026, construction is planned to install a 9-hole disc golf course with the hope of offering a new recreational spot to local kids and to Lebanon Valley College students.

(Continues on Page 2)

About GLRA

Greater Lebanon Refuse Authority (GLRA) was formed under the guidance of the Regional Planning Commission in 1959. It is comprised of one representative from each of Lebanon County’s twenty-five municipalities. GLRA is committed to managing a comprehensive solid waste management system in accordance with Lebanon County’s Solid Waste Management Plan.

GLRA operates the facility in a manner that protects the health and safety of the residents of Lebanon County and the quality of the environment. The facility accepts an average of 417 tons of regulated municipal solid waste from Lebanon County each day---about 130,000 tons annually.

GLRA offers tours of the landfill for schools, colleges, community groups, businesses and organizations. Please contact us if you are interested or have any questions!

**Greater Lebanon
Refuse Authority**
1800 Russell Road
Lebanon, PA 17046

(717) 867-5790

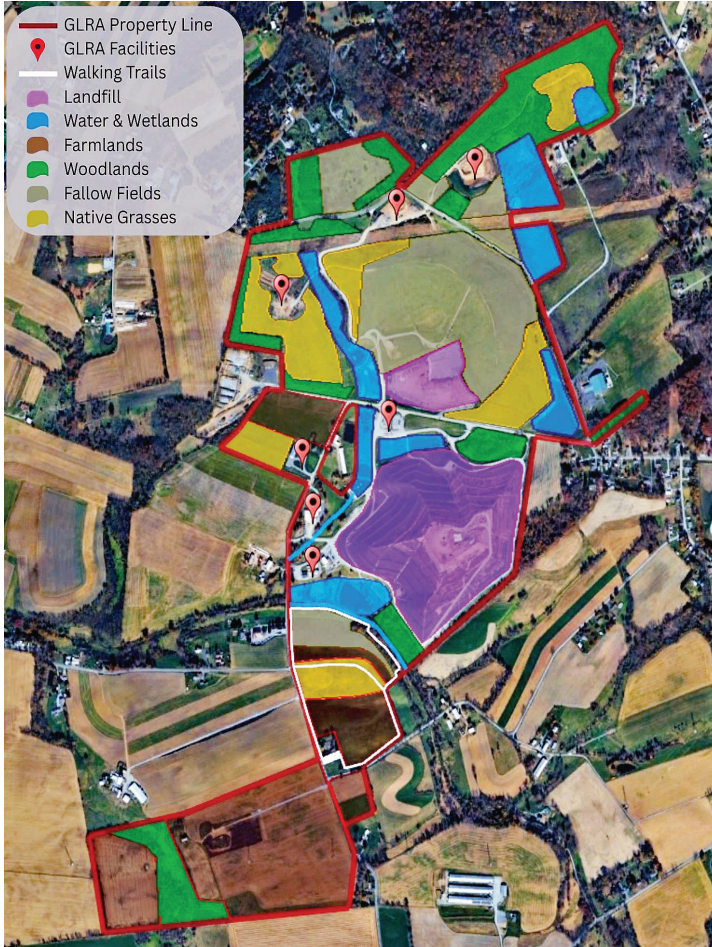
www.goglra.org

Printed on Recycled Paper with Soy-Based Ink



(Purpose in Every Acre continued from Page 1)

The land isn't just for people; it's for wildlife too. In 2025, the GLRA committed 50 acres to reestablish native warm season grasses over the next ten years. Other natural features include wetlands, ponds, forests, and fallow fields all designed to support biodiversity and create a vibrant, thriving ecosystem.



The GLRA continues to balance responsible waste management with giving back to the community and the environment. Trails, wildlife habitats, and recreation opportunities show that our site is so much more than people expect. Landfills aren't usually destinations; but ours is. And although people don't often view landfills in a green light, our long-term goal is for visitors to stop and say, "Wow! The nature preserve accepts trash?!"

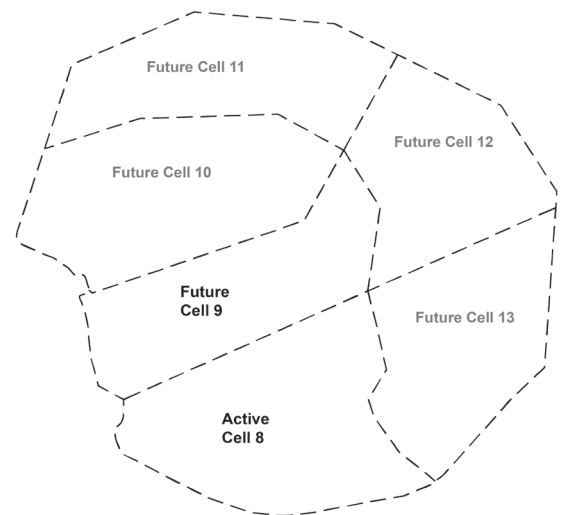
Article contributed by Morgan E. Hosler, Staff Engineer at GLRA.

Landfill Lowdown on Active Cell 8 and Future Cell 9



It has been nearly two and a half years since the first *cell*, Cell 8, of the current landfill (the Heilmandale Expansion) began accepting waste. In its current state of construction, efforts are transitioning from preliminary tasks such as building access roads and placing the initial “fluff” layer of carefully selected waste intended to protect the bottom landfill liner, to activities such as gas collection and stormwater management. The GLRA installed the beginnings of multiple vertical gas collection wells which will be extended higher and higher as the landfill grows. Additional supplementary horizontal gas collection wells have been added to help improve gas extraction while the vertical wells are still in their infancy. Swales are being integrated into the sideslopes and a downchute near the entrance to Cell 8 will be installed to transport stormwater away from critical operations.

In addition to shifting tasks in Cell 8, planning and construction is expected to begin on the *future* Cell 9. Excavation of existing waste and rough grading for the foundation of Cell 9 are tasks originally intended for an outside contractor. But increased focus on employee training and efficiency has enabled the GLRA to take on these assignments. By completing these tasks in-house, GLRA can potentially save money, regain soil for intermediate/daily cover, and have more control over future projects as it relates to needs from outside contractors.



The pre-compacted waste removed from the footprint of the *future* Cell 9 also happens to be an ideal material for completing the remaining final grading of the existing Schilling Landfill (Cells 1 -7) and the areas of the sideslope that settled below final grade known as *sliver fills*. This is due to the fact that waste which has been in place for 40 to 50 years requires little additional compaction when relocated, has little to no odor, and due to its moisture content doesn't tend to blow around as much as new waste. The only real concerns with the material excavated from Cell 9 is that there is a lot of dirt mixed in with it and it tends to be very stringy due to the presence of textiles.

Excavation of the *future* Cell 9 and filling of the remaining areas of the Schilling Landfill is expected to continue throughout 2026 in preparation for the next round of final capping on the existing Schilling Landfill at the end of 2027. The construction of Cell 9 is currently scheduled in late 2027 to early 2028, depending on how quickly Cell 8 fills up.



A Year of Progress at GLRA

A Look Back

The past year was exceptionally productive at the Greater Lebanon Refuse Authority (GLRA). Our primary mission remains the safe management of Lebanon County's waste, and in 2025, we successfully processed 133,907 tons while prioritizing the safety of our employees, customers, and the environment.

Beyond daily operations, we celebrated several key milestones:

- **Expanded Recreation:** We expanded our Union Canal Walking Trail, which now offers visitors a scenic walk along a wooded stream side and Lebanon County farmland with views of three historic Union Canal locks.
- **Landfill Modernization:** As part of the Heilmandale Landfill Expansion, we continued excavating old waste to prepare for Cell 9. This *piggyback* project involves relocating over 500,000 cubic yards of waste deposited before modern liner requirements were established in the 1980s.
 - To date, we have moved approximately 220,000 cubic yards.
 - In 2025, GLRA staff began relocating waste for Cell 9 in-house, moving 12,000 cubic yards last fall. We plan to move another 65,000 cubic yards in 2026, a strategy that will significantly reduce construction costs and timelines when the next landfill cell is constructed.
- **Infrastructure Investment:** We completed a major refurbishment of our 1,000,000-gallon leachate storage tank. The tank was emptied, pressure-washed, repaired, and repainted, extending its service life by 10 to 15 years.
- **Environmental Stewardship:** In partnership with Pheasants Forever, we secured a grant to establish 50 acres of warm-season grasses and wildflowers to support local pollinators and wildlife.
- **Community Engagement:** We held our second annual fishing derby for employees and neighborhood children. Worked with the Blue Mountain Chapter of the National Wild Turkey Federation to hold our 4th Annual Disabled Veterans Hunt. Additionally, GLRA coordinated a multimedia safe battery disposal ad campaign which drove a massive surge in local participation; battery recycling increased from 4,315 pounds in 2024 to 15,180 pounds in 2025.

A Look Forward

Lebanon County residents can rely on GLRA for sustainable waste management well into the future. Our current permitted capacity is projected to last over 20 years. To protect this capacity, we are launching several major construction projects over the next three years:

- **Schilling Landfill Capping:** Final capping of over 35 acres of the Schilling Landfill.
- **Cell 9 Installation:** Installing the liner system and environmental controls for our next landfill cell.
- **Leachate Pre-Treatment Plant:** Construction of a dedicated plant to manage liquids produced as waste decomposes.

These essential projects require significant capital investments. To fund these improvements and rebuild reserves, GLRA implemented a tipping fee increase in 2026, raising the rate from \$72 to \$82 per ton. This was our first increase since 2020. It should be noted that even with this increase GLRA continues to maintain one of the lowest tipping fees in the region.

Article contributed by Robert "Skip" Garner, Executive Director at GLRA.

2025 GLRA Annual Employee Recognition Ceremony

At its Annual Employee Recognition Ceremony held on December 12, 2025, GLRA honored **Ken Baum** as the 2025 Employee of the Year.

Ken, a Heavy Equipment Operator with GLRA, was recommended to the Selection Committee by his fellow employees for his strong initiative, consistently exceeding expectations, positive pleasant attitude, and his willingness to help others. These notable qualities, along with his job knowledge and skills, open communication with fellow employees, and responsiveness in taking on new tasks, earned him this recognition from fellow GLRA employees. In appreciation and achievement for the 2025 Employee of the Year, Ken was presented with a gift of his choice valued at \$500.

Longevity awards are presented each year to GLRA employees that have achieved noteworthy years of dedicated service to the organization. A total of eight GLRA employees received a longevity award in 2025:

Amy Mazzella di Bosco, Recycling Coordinator
Steve Bashore, Truck Driver
Kevin Yiengst, Heavy Equipment Operator
Tina Long, Operations Support Specialist
Ken Baum, Heavy Equipment Operator
James Hess, Laborer
Michelle Miller, Compliance|Safety & Assistant Recycling Coordinator
Emily Sandoval, Operations Support Specialist



On left, Executive Director Skip Garner, and Employee of the Year Ken Baum, on right.

- 30 Years of Service
- 25 Years of Service
- 25 Years of Service
- 10 Years of Service
- 5 Years of Service
- 5 Years of Service
- 5 Years of Service
- 5 Years of Service

Resident Safety Amidst GLRA Site Excavation

Most residential customers use the GLRA Convenience Center to deposit their trash; however, there are many instances where a resident may need to unload on the actual active landfill site. As GLRA continues to expand landfilling operations, safety remains at the forefront. Not only do each employee and customer need to heed caution to safely cross Russell Road to the working-face landfill, but once on the access roadway, there is much activity occurring around the pad site than just receiving daily deliveries! When utilizing the Convenience Center separate from the landfill pad, there is still a constant flow of truck traffic coming across Russell Road, which also requires patience, awareness and defensive driving.

GLRA is excavating our own pre-construction for Cell 9. Tri-axles, articulated trucks, and the water truck are constantly navigating to and from the original landfill site, moving old waste in preparation of a new lined site. With so much movement of machinery and customer trucks of all sizes, constant alertness is required to accomplish a safe transition throughout each working day. GLRA drivers are instructed to yield to customers, but as the customer, treat that courtesy with caution as blind spots may still be present. Make yourself seen or await driver acknowledgment before proceeding your route of travel. Be cautious of other customers as well; employ defensive driving queues, utilize appropriate vehicle signals.



When outside your vehicle, make sure you are seen! Wear some type of fluorescent or bright shirt or jacket for darker times of the morning throughout the year. GLRA's mission in safety is to send each person, each essential part of our daily workings, back home in at least the same condition in which they arrived. Every customer and every resident visiting any of our facilities is a significant part of our overall safety mission. Visiting GLRA hopefully gives you the same satisfaction it gives us, knowing your waste and recycling needs are being properly met and properly managed in this community. Stay safe and see you soon!

Article contributed by Michelle Miller, Compliance|Safety & Assistant Recycling Coordinator at GLRA.

2026 Trash Fee Schedule

GLRA ONLY accepts the following waste types:

Residential Waste
Commercial Waste
Construction Waste
Demolition Debris
Clean Fill
Residual Waste*
Green Waste
Clean Wood



Tipping Fee

\$82.00 per ton

\$41.00 minimum fee (up to 1000 pounds)

Includes Residential Waste, Commercial Waste, Construction Waste, Demolition Debris, Clean Fill, and Tree Stumps.

*Residual Waste Fee is assessed on a case by case basis.

There is a \$15.00 surcharge on each appliance containing freon in addition to the tipping fee.

Special Handling Fee

\$90.00 per ton

\$45.00 minimum fee (up to 1000 pounds)

Special Handling of municipal waste requires a pit to be dug for immediate disposal and closure after placement of the waste. An Equipment Usage Fee may also be charged in addition to the Special Handling Fee.

Green Waste Fee

\$36.00 per ton

\$18.00 minimum fee (up to 1000 pounds)

Includes leaves, tree trimmings, grass clippings, garden residue, shrubbery, branches, limbs, prunings under 6 inches in diameter.

DOES NOT INCLUDE plastic bags, rocks, treated or painted wood, tree stumps or tree trunks.

Clean Wood Fee

\$36.00 per ton

\$18.00 minimum fee (up to 1000 pounds)

Includes any untreated or unpainted wood products such as lumber, lumber scraps, or wood pallets which are free of any chemicals, paint, oils, solvents, epoxy glue or heavy metals.

2026 Holiday Schedule

Memorial Day	May 25	Closed
4 TH of July	July 4	Closed
4 TH of July Observed	July 6	Landfill Open Office Closed
Labor Day	Sep 7	Closed
Thanksgiving Day	Nov 26	Closed
Christmas Eve	Dec 24	Close at Noon
Christmas Day	Dec 25	Closed
New Year's Eve	Dec 31	Close at Noon
New Year's Day	Jan 1	Closed

Tire Disposal Fees



Restrictions: No Rims

Rubber Tires Only (Steel Belted or Bias)

Bicycle		\$ 1.00 each
Motorcycle		\$ 2.00 each
Car	12" to 17"	\$ 4.00 each
Truck	15" to 17"	\$ 6.00 each
Truck	18" to 23"	\$12.00 each
Other Tires*	over 23"	\$50.00 each

*Other Tires include: Off The Road (OTR), heavy equipment, tractor, and/or farm implement.

GLRA License Is Required

Acceptable Forms of Payment

All customers disposing of trash will have the option to pay using one of these acceptable forms of payment:

- Cash
- Personal Check
- Debit
- Visa*
- MasterCard*
- Discover*
- American Express*



*Please note that there will be a 3.0% surcharge applied to each credit card payment transaction.



A commercial license must be affixed to the front driver's side bumper of a vehicle that is commercially hauling municipal waste.

What's a Commercial License?

Often there is confusion as to whether an individual's vehicle would be licensed as a Commercial Customer or a Residential Customer. Individuals often think that Commercial Licenses (permits) are only for those that pick up municipal solid waste (MSW) on a regular basis around the County using a garbage truck.

For purposes of licensing a vehicle, a Commercial License (permit) is defined as anyone who collects and hauls municipal solid waste and or residual waste for a fee, generally in a truck with more than four wheels. **This category also includes any size of vehicle that is used to collect waste from any property, job site, or location other than the property of the licensee for a fee.** A few examples are: landlords; junk removal; waste removal from someone other than yourself; and house clean-outs for foreclosures.

Residential Licenses (permits) are reserved only for those individuals who are bringing their **OWN** household trash into the landfill for disposal. When you are ready to bring your waste into the GLRA, and are still confused as to which license you will need, feel free to call into our office at (717) 867-5790 and someone will be available to assist you!

Pennsylvania Act 90 Recap

What is Act 90?

Act 90, Pennsylvania's Waste Transportation Safety Program, requires all waste transportation vehicles (trucks and truck tractors with a registered gross vehicle weight greater than 17,000 lbs. and trailers with a registered gross vehicle weight greater than 10,000 lbs.) transporting municipal or residual waste to waste processing or disposal facilities in Pennsylvania to have a valid Waste Transporter Authorization. The law prohibits processing and disposal facilities from accepting waste from waste transportation vehicles that do not have a valid authorization.



What does "Regularly Used" mean?

"Regularly Used" refers to the transportation of municipal or residual waste by a motor carrier vehicle or waste trailer if the transportation is being done for commercial purposes or in furtherance of a business. Publicly owned motor carrier vehicles and waste trailers are regularly used if the transportation is being done for the collection and transportation of municipal or residual waste.

Are Farm Vehicles Included?

Yes, if the gross vehicle weight rating of the truck or truck tractor is greater than 17,000 lbs. and or a trailer is over 10,000 lbs.

Important Information

Waste transportation vehicles with expired stickers/cab cards are not permitted to dispose of waste at solid waste facilities in Pennsylvania. Accepting waste at processing or disposal facilities in Pennsylvania, from an unauthorized waste hauler, is a violation of Act 90. Haulers are reminded that they should submit a renewal at least 90 days prior to their expiration date to ensure no lapse in their authorization. Any questions should be directed to DEP at 717-783-9258.

Submit Commercial License Application Online

The GLRA's Commercial License Packet is now an ONLINE application process. It's paperless! No more paper documents! It is an instant ONLINE submission. GO to the homepage of our website www.goglra.org CLICK the Commercial License Application BUTTON located on the BANNER at the BOTTOM of our homepage. Please call with any questions or concerns!

Commercial License Application

Purchase Compost

GLRA Saving (Recycling) Center

CONTACT US

1800 Russell Road
Lebanon, PA 17046
Phone: 717-867-5790
Fax: 717-867-5798

Need to Dispose of Household Hazardous Waste?

1-800-742-5542 Ext. 212 or Ext. 123 or www.mxiinc.com/lebanon

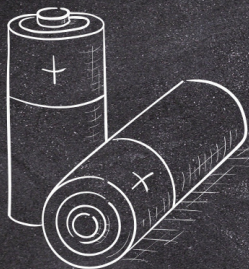
Lebanon County Residents, are you looking for information on how to properly dispose of old lawn and garden chemicals, automotive fluids, paints, pesticides and poisons? These are items that you cannot put out with the regular trash, pour down a drain, or dump into the ground in the backyard. GLRA sponsors an at home collection of Household Hazardous Waste for Lebanon County residents for **ONLY a \$15 Co-Pay!**

The quantity of material that can be collected per pick-up is limited to the items that can be safely placed inside the kit/bag. The only exception to any materials being placed outside the kit/bag are fluorescent tubes/bulbs (limit of 5) and an automotive battery (limit of 1).

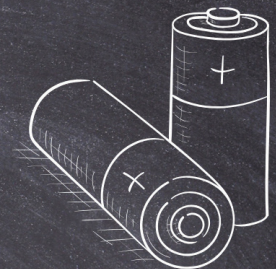
To schedule an at home collection of household hazardous waste, call Lebanon County's Household Hazardous Waste Hotline at **1-800-742-5542 Ext. 212 or Ext. 123** or visit www.mxiinc.com/lebanon.



DUE TO FUNDING, THERE IS A LIMIT OF ONE PICK-UP PER HOUSEHOLD PER YEAR.



RECYCLE CLEAN RECYCLE RIGHT



**Power Up to Safety
FREE Battery Recycling
Rechargeable & Single-Use Batteries
Up to 11 pounds and Under 300Wh**



**Greater Lebanon Refuse Authority
Electronics Recycling Center
1805 Russell Road
Weekdays: 8:00 am – 3:30 pm
Saturdays: 8:30 am – 11:30 am**

Inside GLRA's Cavity Nester Community

Eastern Bluebirds and Tree Swallows are thriving here at GLRA. Twenty-five (25) cavity nesting boxes scattered throughout the property are currently monitored each season. Eastern Bluebird males, a lovely royal blue from head top to tail tip with a burnt orange chest and white underbelly, differ from the more neutral colored females donning less vibrant blue and more orangey-grey, besides their wing and tail feathers. Tree Swallows, both male and female, are a visually appealing metallic blue-green with a snow-white chin and underside with unmistakably pointed wing tips. During the mating season, these two native cavity birds have particularly taken to our site boxes. Monitoring the boxes here at GLRA began decades ago with a couple volunteers on behalf of the Quittapahilla Audubon Society. Weekly monitoring allows for clear record keeping without disturbing crucial nesting habits, yet beneficial clean-outs may be conducted of unwanted pests, like yellow jackets, field mice, mud bees and non-native opponents.



Protected birds are established under the Migratory Bird Treaty Act in Pennsylvania. One unprotected species, observed often, is the House Sparrow, an invasive cavity nesting bird which competes for on-site nesting areas. There have been instances where House Sparrows will take over a nesting box, build on top of an occupied nest and even eliminate the existing female, eggs or chicks. Though invasive today, the House Sparrow was introduced to the United States, specifically Brooklyn, New York, in 1851, to help eradicate an invasive moth species.

Learning the nesting habits of cavity birds is a real privilege. Eastern Bluebirds typically form a perfectly cupped nest with dried field grasses and pine needles, whereas Tree Swallows also use dried or fresh grasses, but top their nest, before laying eggs, with a layer of soft down feathers shed from other birds.



As the torch was passed on to monitor these nesting boxes, it really is a great honor to observe and record each season. Despite presence of predators and other competitive cavity nesters, Eastern Bluebirds and Tree Swallows have had a successful run the last two seasons. In 2024, 18 Bluebird chicks fledged their nests. In 2025, 29 Blue-



birds fledged their nests. Tree Swallows also did well, having 15 chicks fledge in 2024 and 18 in 2025. Ongoing conservation efforts for our protected birds are greatly necessary. Monitors can report their season's numbers to a member affiliated with the Pennsylvania Bird Atlas. These reports are recorded on the Bird Atlas Map, which is available for viewing online.

GLRA is known and respected for sound integrated municipal solid waste management, nonetheless GLRA is just as driven to provide natural habitat for all kinds of wildlife, and we are honored to provide a thriving environment for such a diverse *community*.

Article contributed by Michelle Miller, Compliance|Safety & Assistant Recycling Coordinator at GLRA.

Meet the Locals...Beauty on the Fringe of Waste

As many know, Greater Lebanon Refuse Authority is home to many different species of animals. Geese, turkey vultures, and Whitetail Deer being some of the most common residents you'll see here. However, recently, we have been made aware of a less common animal who calls our landfill home.

While Whitetail Deer are a regular occurrence on-site, we now have a Piebald doe who roams the property. She was first caught on a trail camera in mid-September, and needless to say everyone on staff was in awe over this beautiful anomaly.

Piebaldism is a genetic mutation that leads to a deer having more white on their coats than what's to be considered normal, which is not to be confused with albinism. Albino deer lack all color and have pink eyes, where Piebalds still have their natural brown coat and eye color. This genetic abnormality affects about one in one thousand deer, and it's believed to make up only two-percent of the deer population. With those statistics, it's clear that seeing this doe on site is a pretty rare occurrence.



Coat Pigmentation can vary in expression from Piebald to Piebald, some having a few extra white patches to deer with only small amounts of brown on their body. This unique mutation is a recessive trait, which means both parents need to carry the gene in order to produce Piebalds of their own. Meaning our Piebald doe could potentially produce fawns that are visibly Piebald or she could also produce normal fawns which will then carry the Piebald trait. Regardless of her future offspring, knowing that this mutation is in the genetic makeup of our local deer herd is still pretty neat.



Now, Piebalds can also suffer from other genetic defects that can negatively affect their daily lives, such as, a bowed spine or crooked legs. While severe abnormalities are fairly rare in Piebalds, they can still occur, but lucky for us, our doe looks healthy overall. However, it's worth mentioning, that it's still a miracle she has made it this far. Whether from their disadvantage in camouflage to seemingly avoid having any other outward defects, living into adulthood as a Piebald is not for the weak in the animal kingdom so we can only hope that she makes it there herself.

That being said, although part of our Conservation Plan for GLRA does include the ethical harvesting of local Whitetail Deer on-site, please do not fear. Those that hunt our property have

all agreed that our Piebald doe will not be harmed and/or harvested by anyone at GLRA. She is a true beauty that many have come to respect and look forward to seeing.

When you're visiting the landfill or driving by, make sure to keep your eyes peeled. She's been spotted a few times by employees and/or on a trail camera since September, and we've even had neighbors tell us about seeing her at dusk. This beautiful Piebald is a site to behold, and one we were lucky to get to witness for ourselves.

2026 Plant Bedding ONLY

Wood Mulch NOT Available



Daily Loading Schedule

MONDAYS	8:00 am to 11:00 am
TUESDAYS	8:00 am to 11:00 am
WEDNESDAYS	8:00 am to 11:00 am
THURSDAYS	8:00 am to 11:00 am
FRIDAYS	8:00 am to 11:00 am
SATURDAYS	8:30 am to 11:30 am

Only \$12 per cubic yard
A Tarp is Required

GLRA Management Staff

EXECUTIVE DIRECTOR
Robert "Skip" Garner

OPERATIONS MANAGER
Loretta M. Baker

ASSISTANT OPERATIONS MANAGER
Zachary Michael

SENIOR STAFF ENGINEER
James M. Zendek, P.E.

STAFF ENGINEER
Morgan E. Hosler

RECYCLING COORDINATOR
Amy Mazzella di Bosco

COMPLIANCE | SAFETY
ASSISTANT RECYCLING COORDINATOR
Michelle Miller

STAFF ACCOUNTANT/HR MANAGER
Jessica Rodríguez Ferrer

SOLICITOR
Weiss Burkett



FREE LEBANON COUNTY SHRED EVENT JUNE 26, 2026 8:00 AM TO 12:00 PM

PAPER Documents ONLY!
LIMIT PER VEHICLE is
5 File Boxes (12" x 18") or
5 Brown Paper Grocery Bags

NO PLASTIC BAGS, NO BINDERS,
NO BINDER CLIPS, NO METAL,
OR ANY TYPE OF TRASH!

Event location at the
Greater Lebanon Refuse Authority
Electronics Recycling Center
1805 Russell Road, Lebanon

Please check our website on May
1st to confirm event date and time!

www.goglra.org